

Noise Near The Instrument Cluster

Vehicle Type: **911 Carrera (997)/911 Carrera S (997)**

Model Year: **As of 2005**

Concerns: **Instrument cluster**

Situation: **Buzzing noise near the instrument cluster.**

Rattling/buzzing noises can come from near the instrument cluster due to tolerances between the dashboard inset and instrument cluster.

As of the specified date of introduction, tricot tape has been used on the instrument cluster centering pins and felt is attached to the bottom of the instrument cluster as a remedial measure.

Date of Introduction: Strips of **tricot tape** are used on the instrument cluster centering pins from February 25, 2005 onwards, as of the following VINs:

99 85S 71 7496 Coupé
99 X5S 74 2168 Coupé S
99 55S 75 5244 Cabriolet
99 95S 76 5238 Cabriolet S

In addition, **felt** is attached to the bottom of the instrument cluster from September 29, 2005 onwards, as of the following VINs:

99 16S 71 6000 Coupé
99 86S 74 1490 Coupé S
99 26S 75 5946 Cabriolet
99 26S 76 6104 Cabriolet S



Note

Action

Required:

In the event of a complaint, **felt** must be attached to the bottom left and right of the instrument cluster and **tricot tape** must be applied to the instrument cluster centering pins on vehicles manufactured **before February 25, 2005**. However, **only the felt** is required on vehicles manufactured between February 25, 2005 and September 29, 2005.

In the event of repairs, always check that both measures have been carried out on a **new instrument cluster**. If not, make sure to implement these measures.

Parts Info:	999.551.170.40	⇒ Tricot tape, 1 m (enough for around 10 vehicles)
	999.551.140.40	⇒ Felt, 1 piece (enough for around 1 vehicle)

Tools: Scissors

- Work Procedure: 1 Remove instrument cluster, ⇒ *Workshop Manual '902519 Removing and installing instrument cluster'*.
- 2 Applying **tricot tape**:
- 2.1 Sticking a strip of tricot tape on each of the two centering pins for the instrument cluster (rear):
 - 2.2 Cut off two 50-mm long strips of tricot tape, Part No. 999.551.170.40.
 - 2.3 Pull off protective film on tricot tape (self-adhesive).
 - 2.4 Center the tricot tape (⇒ *Figure 1 -Inset 1, Item A-*) at the lower edge of one centering pin (⇒ *Figure 1 -Inset 1, Item B-*) and then wrap it around the centering pin.

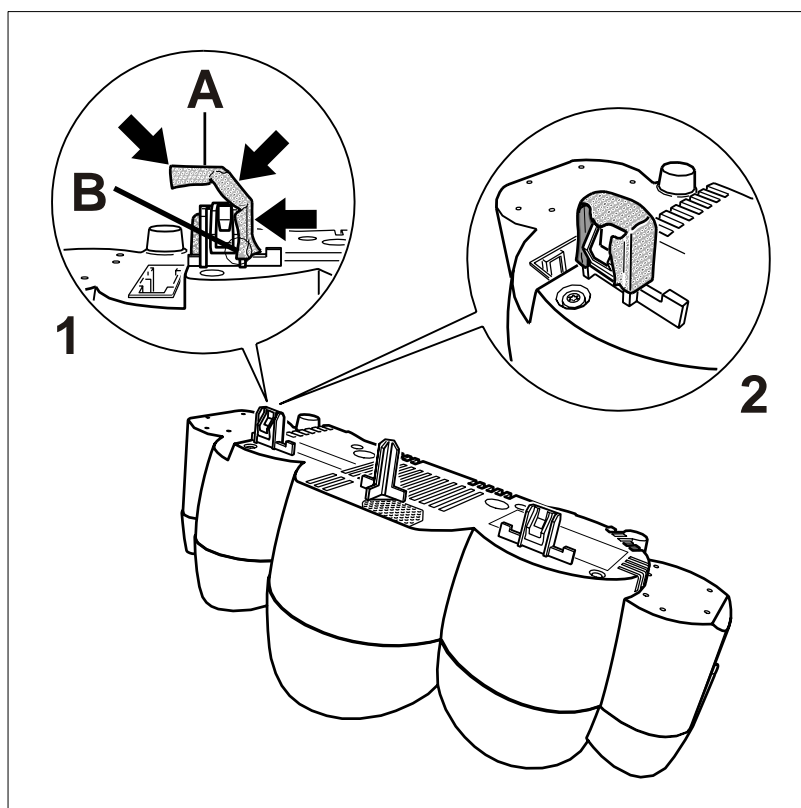


Figure 1

- 2.5 Press the tricot tape firmly onto the centering pin and turn it up at the corners (⇒ *Figure 1 -Inset 2-*).
- 2.6 Follow the instructions given in Steps 2.3 to 2.5 for the second centering pin.

3 Attaching felt:

- 3.1 Attach felt to the bottom of the instrument cluster at the left and right:
- 3.2 Cut the felt, Part No. 999.551.140.40, in the middle lengthwise.

- 3.3 Pull off protective film on the felt (self-adhesive).
- 3.4 As shown in the ⇒ *Figure 2 -Inset-*, attach the felt (⇒ *Figure 2 -Inset, Item A-*) to one side of the instrument cluster approx. 2 to 3 mm from the decorative ring.

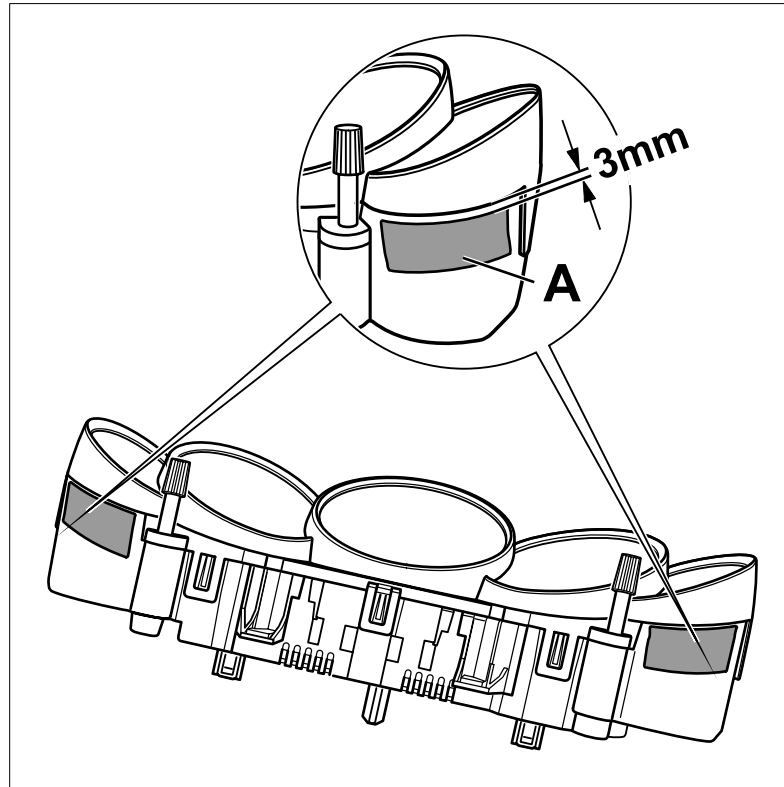


Figure 2

- 3.5 Follow the instructions given in Steps 3.3 to 3.4 for the other side of the instrument cluster.
- 4 Install instrument cluster, ⇒ *Workshop Manual '902519 Removing and installing instrument cluster'*.

Working Time: 90 25 49 40: Reworking the instrument cluster
Includes: Removing and installing instrument cluster

Labor time: **50 TU**

References: ⇒ *Workshop Manual '902519 Removing and installing instrument cluster'.*

Important Notice: Porsche Cars N.A Technical Bulletins are intended for use by professional technicians, not a "Do-it-yourselfer." They are written to inform these technicians of conditions that may occur on some vehicles, or to provide information that could assist in the proper service of a vehicle. Special tools may be required to perform certain operations identified in these bulletins. Use of tools and procedures other than those recommended in these bulletins may be detrimental to the safe operation of your vehicle. Properly trained technicians have the equipment, tools, safety instructions and know-how to do a job properly and safely. If a condition is described, do not assume that the bulletin applies to your vehicle, or that your vehicle will have that condition. See your Porsche Dealer for information on whether your vehicle may benefit from the information. Part numbers listed in these bulletins are for reference only. Always check with your authorized Porsche dealer to verify correct part numbers.

© Porsche Cars North America, Inc.

Dealership	Service Manager	Shop Foreman	Service Technician				
Distribution							
Routing	Asst. Manager	Warranty Admin.	Service Technician				

Dr. Ing. h.c. F. Porsche AG is the owner of numerous trademarks, both registered and unregistered, including without limitation the Porsche Crest®, Porsche®, Boxster®, Carrera®, Cayenne®, Tiptronic®, VarioCam®, PCM®, 911®, 4S®, and the model numbers and distinctive shapes of Porsche's automobiles such as, the federally registered 911 automobile. The third party trademarks contained herein are the properties of their respective owners. Porsche Cars North America, Inc., believes the specifications to be correct at the time of printing. However, specifications, standard equipment and options are subject to change without notice.

Printed in the USA